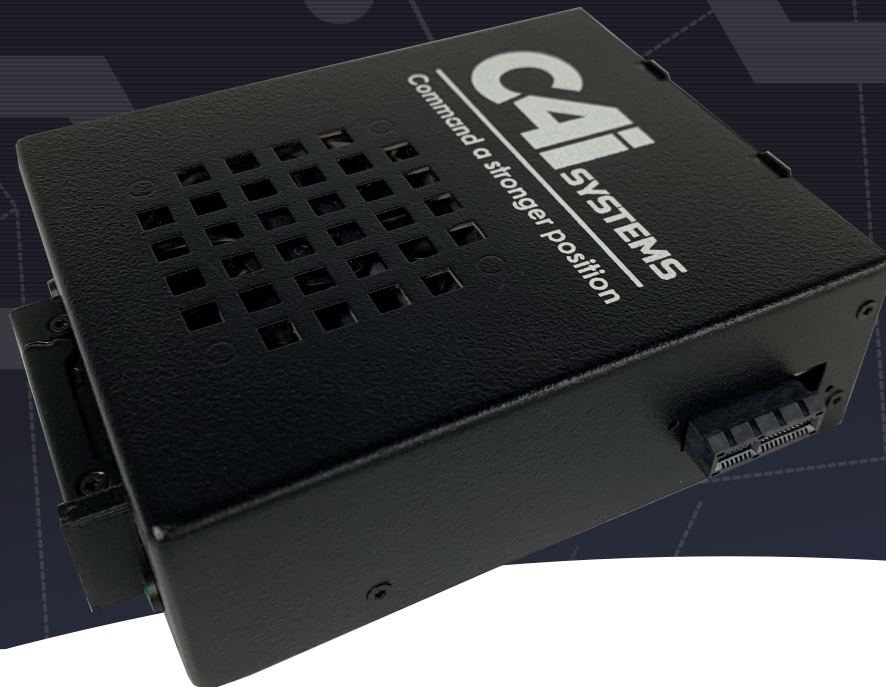


# DESKTOP READER-M

The Desktop Reader-M provides the BioDigitalPC® Card with a fully functioning desktop computer experience.



## Rugged, compact and modular computing

The BioDigitalPC® Desktop Reader-M has been specifically designed for use with the militarised BioDigitalPC®, allowing HQ users to move their pre-mission planning and applications seamlessly from the HQ to any BioDigitalPC® enabled platform.

The BioDigitalPC® Desktop Reader-M available in two formats provides access across the BioDigitalPC® range from the Dual Core Atom to the leading i7 Kabylake-R processor. Operating off 12vDC at an average power draw of 10 watts for the dual core and 25 watts for the i7 range. Its simplicity, very small size, and low power consumption provides convenience and flexibility.

Just insert the BioDigitalPC® Card into the connector located in the BioDigitalPC® Desktop Reader-M and it will automatically power up. No need to hit a power switch! The BioDigitalPC®/MobyIPC™ Card will boot up whatever operating system the user has installed. The Desktop Reader-M includes a red LED to indicate power to the board, and a green LED to indicate the BioDigitalPC®/MobyIPC™ Card has been inserted.

## Standard Configuration:

- Dimensions: 112mm Width x 95mm Height x 137mm Depth
- 12VDC Input 2.5mm Jack
- Two USB 2.0 Connectors
- One USB 3.0 Connector
- One Mini-DP++ Connector (servicing: DP++, HDMI, DVI, and VGA)
- One 10/100/1000 Ethernet connector
- PCIe x1 Slot (Optional)
- Red Power LED
- Green Card Detect LED

