

# C-REACH

An **ISR** capability that delivers real time data to headquarters. The right information, at the right time, in the right place.



## Real time, high value data for informed decision making

A robust, affordable bearer agnostic communication system, which extends the simultaneous distribution of key voice and data communications from the most remote environments, is a priority for today's operational decision makers.

The C-REACH Manpack and Vehicle systems, designed for operators within the 'last mile', deliver vital voice and data communications through all levels of the command chain, from the smallest, self-contained system available today.



# C-REACH

**C-REACH** is the first communications solution that provides a modular Beyond Line of Site (BLOS) voice, video and data gateway. Users deployed to the forward edge of operating areas have the ability to communicate mission critical information to tactical and strategic decision makers, without the need to carry or transport additional radios, batteries, chargers or antennas.

Both the **C-REACH** Manpack and Vehicle systems allow users to communicate with almost any variant of modern radio communication system. **C-REACH** creates an operating umbrella that allows any user with a corresponding radio to achieve complete BLOS communications on a global scale through SATCOM/IP networks.

**C-REACH** Manpack provides a global, simultaneous voice and data capability allowing both radio and video traffic to be securely passed through the command chain from a single lightweight system that can be self-sufficient for up to 72 hours\* in the most remote environments.

**C-REACH** Vehicle provides BLOS SATCOM on the MOVE while delivering the same simultaneous voice and data capability of the Manpack system.

**C-REACH** has been tested to meet Mil Spec 810F and is IP65 rated.

\* Relates to use of a single channel radio network operating over 8 hours on a 10% transmit and 90% standby cycle.

## Key Features:

- Informed, confident decision making: **C-REACH** provides real time, high value data to assist with decision making.
- Extended global reach: **C-REACH** extends the range of radios and video devices, securely, anywhere.
- Portability: **C-REACH** Manpack is the only system that is able to deliver this level of information from a single backpack.
- Cross platform compatibility: **C-REACH** provides invaluable connectivity to wider users or coalition partners, even if these users are not on the same radio system or encryption.
- A secure solution: **C-REACH** provides commanders with secure AES256 data as standard. Higher security options available.
- Interoperability: Multiple remote teams can be supported with 100+ users at HQ locations.
- Speed: The **C-REACH** system can be deployed and operational within 5 minutes.

## Specifications:

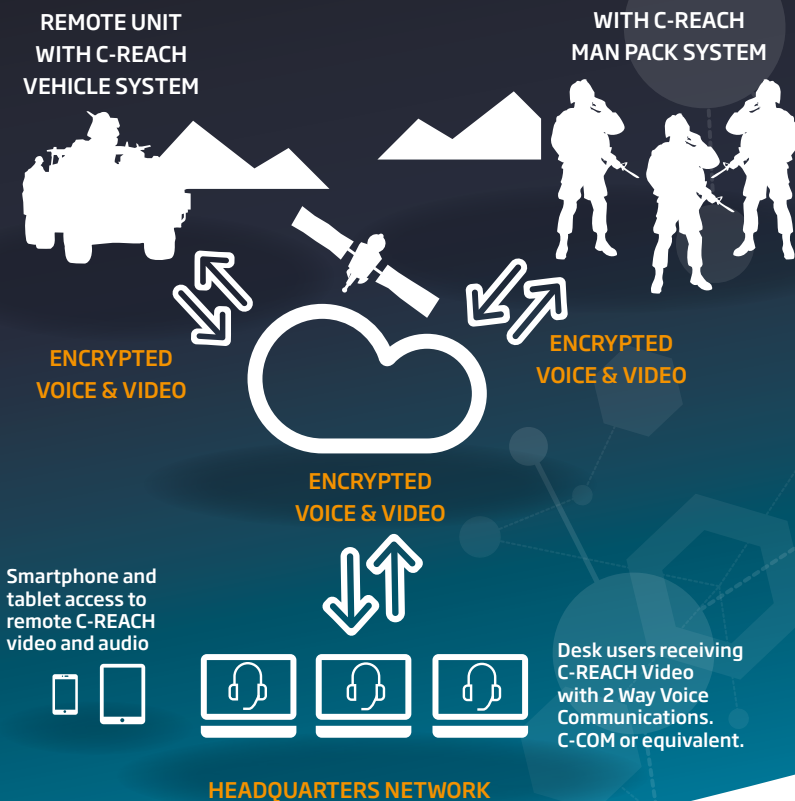
### C-Reach Vehicle

- Supply Voltage 9 to 36VDC.
- 2 Composite Video Inputs with over the air Codec changes.
- PTZ Connectivity and trigger inputs.
- Video supported 128 x 96 up to 704 x 576 (4CIF), frame rate up to 25fps.
- 4 x Radio channels with variable Codec changes per channel.
- Gigabit Router.
- 1 x WAN Ethernet Port.
- 1 x LAN Ethernet Port.

### C-Reach Manpack

- Supply Voltage 9 to 36VDC.
- Single Composite Video Input with over the air Codec changes.
- PTZ Connectivity & trigger input.
- Video supported 128 x 96 up to 704 x 576 (4CIF), frame rate up to 25fps.
- Single Radio channel with variable Codec changes.
- 1 x WAN Ethernet Port.
- 1 x LAN Ethernet Port.

## C-REACH Equipment



# C4i SYSTEMS

Command a stronger position

Unit 1, Twyford Court  
Rotherwas  
Hereford HR2 6JR  
United Kingdom

+44 (0)1432 354855  
enquiries@c4isystems.com  
www.c4isystems.com

